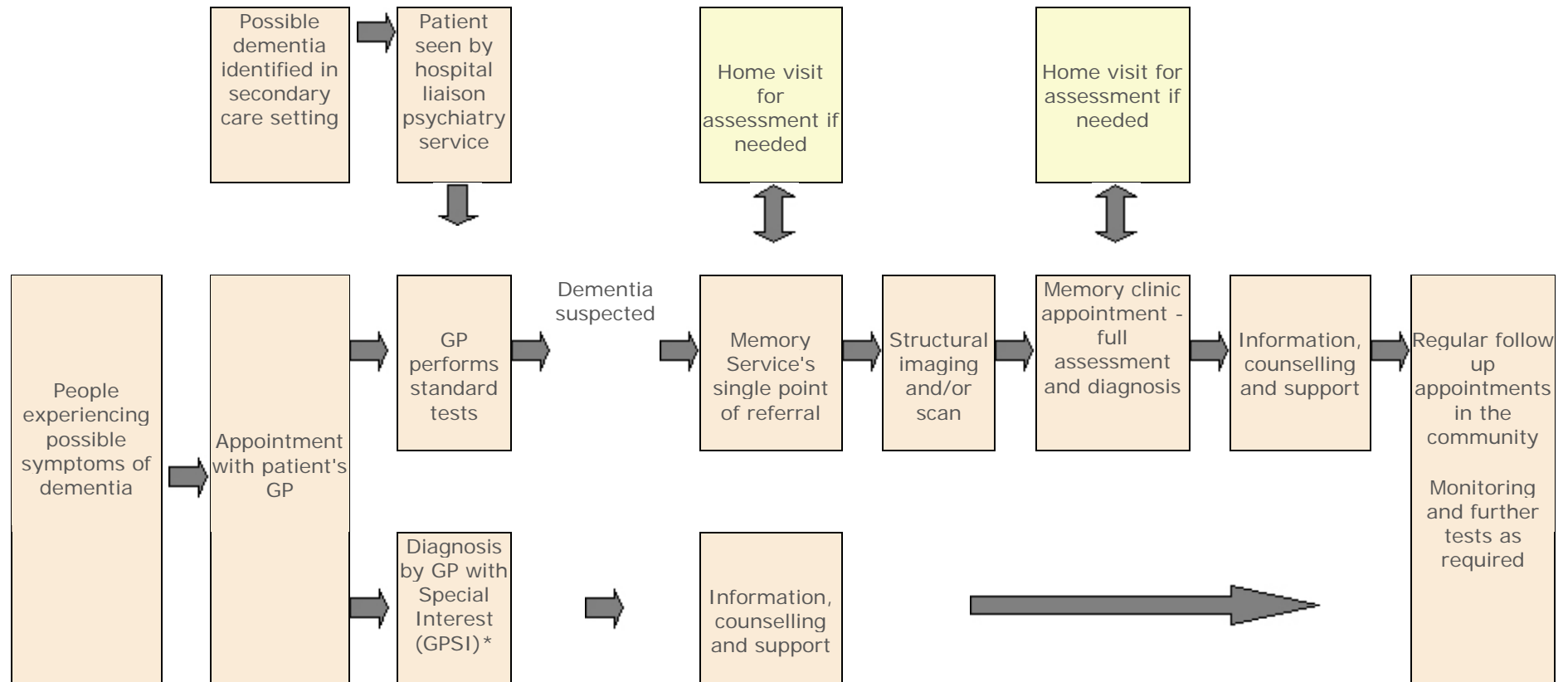


**For consultation –  
The proposed care pathway for early diagnosis in dementia**

The diagram below illustrates the proposed care pathway for early diagnosis in dementia:



\*There are currently no GPSI's in Oxfordshire to support dementia at the moment.

**The Early Diagnosis in Dementia care pathway - explained**

The table below further explains certain sections of the dementia care pathway diagram:

<b>Section of dementia care pathway</b>	<b>Further details</b>
GP performs standard tests	These tests may include a memory assessment and blood tests. If dementia is then suspected a referral is sent on to the Memory Service.
Diagnosis by GP with Special Interest (GPSI)	A patient's GP could refer the patient to a GP with Special Interest (GPSI). GPSIs could provide a diagnosis to a patient with dementia in the future (there are currently none in Oxfordshire at present).
Memory Service single point of referral	Referrals are assessed and assigned at the Memory Service according to clear criteria.
Memory Clinic appointment - full assessment and diagnosis	Memory Clinics operate throughout Oxfordshire at main community locations and offer assessment, support, information and advice to those with memory problems and their carers. A full assessment and diagnosis is given at the Memory Clinic in line with National Institute of Clinical Excellence (NICE) guidance. The decision to start medication for dementia is also made.
Home visit for assessment if needed	If the patient with dementia has mobility or travelling difficulties then an assessment at home can be arranged.
Information, counselling and support	After a dementia diagnosis is given, information is provided for the person with dementia and their family/carer as necessary. Post diagnosis services are offered (such as counselling) and a letter is sent to the patient's GP confirming the diagnosis. It is important that equal access to information and support is provided regardless of whether a diagnosis is given through a GPSI or a Memory Clinic.
Regular follow up appointments in the community  Monitoring and further tests as required	Follow up appointments could take place in the community by a specialist nurse or GP. This may include monitoring of medication and tests for the progression of dementia, including other related problems such as depression.