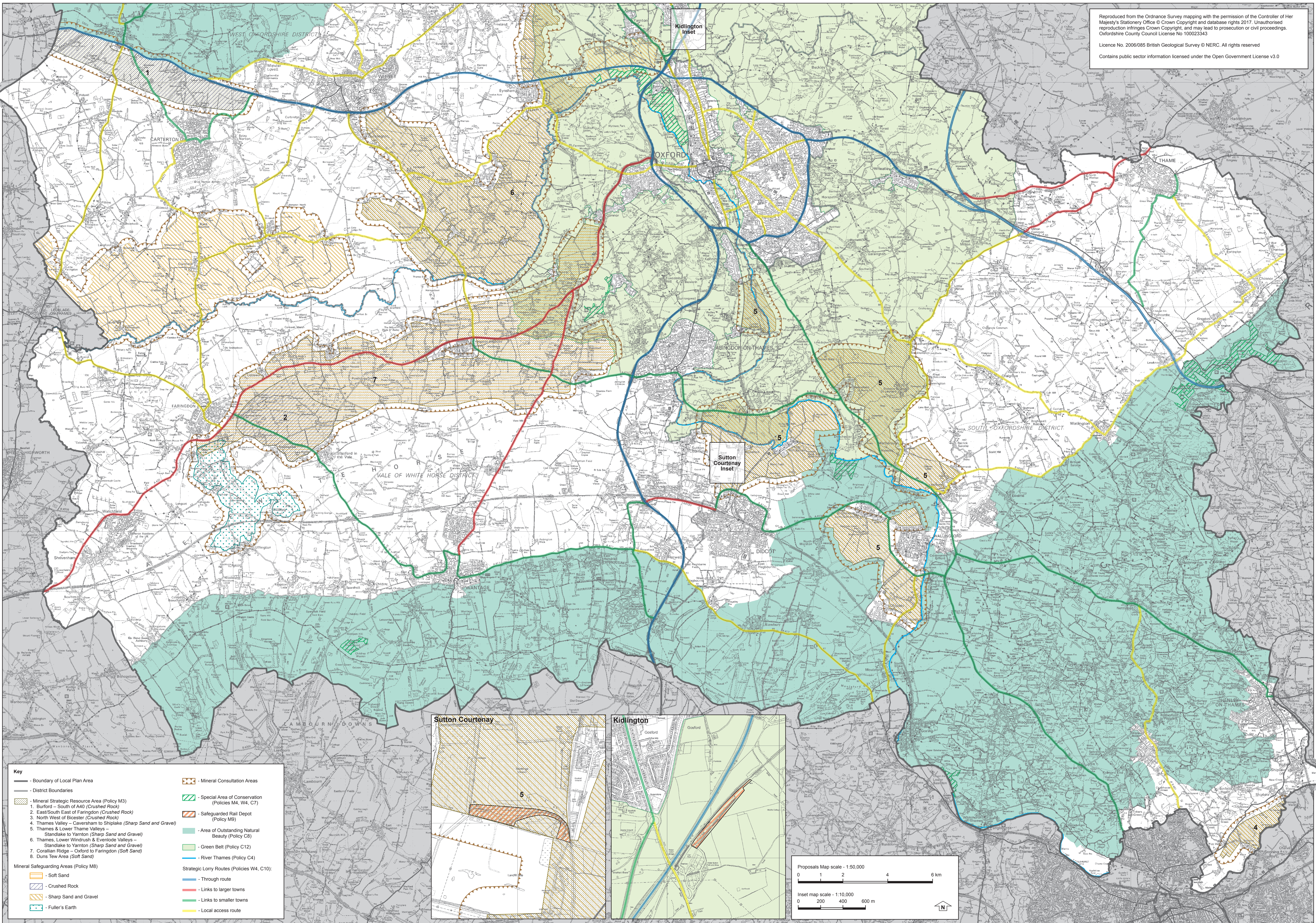


Reproduced from the Ordnance Survey mapping with the permission of the Controller of Her Majesty's Stationery Office © Crown Copyright and database rights 2017. Unauthorised reproduction infringes Crown Copyright, and may lead to prosecution or civil proceedings. Oxfordshire County Council License No 100023343
Licence No. 2006/085 British Geological Survey © NERC. All rights reserved
Contains public sector information licensed under the Open Government License v3.0



Key

- Boundary of Local Plan Area
- District Boundaries
- Mineral Strategic Resource Area (Policy M3)
 - 1. Burford – South of A40 (*Crushed Rock*)
 - 2. East/South East of Faringdon (*Crushed Rock*)
 - 3. North West of Bicester (*Crushed Rock*)
 - 4. Thames Valley – Caversham to Shiplake (*Sharp Sand and Gravel*)
 - 5. Thames & Lower Thames Valleys – Standlake to Yarnon (*Sharp Sand and Gravel*)
 - 6. Thames, Lower Windrush & Evenlode Valleys – Standlake to Yarnon (*Sharp Sand and Gravel*)
 - 7. Corallian Ridge – Oxford to Faringdon (*Soft Sand*)
 - 8. Duns Tew Area (*Soft Sand*)
- Mineral Safeguarding Areas (Policy M8)
 - Soft Sand
 - Crushed Rock
 - Sharp Sand and Gravel
 - Fuller's Earth
- Mineral Consultation Areas
- Special Area of Conservation (Policies M4, W4, C7)
- Safeguarded Rail Depot (Policy M9)
- Area of Outstanding Natural Beauty (Policy C8)
- Green Belt (Policy C12)
- River Thames (Policy C4)
- Strategic Lorry Routes (Policies W4, C10):
 - Through route
 - Links to larger towns
 - Links to smaller towns
 - Local access route

